

VICINITY MAP  
SCALE: 1"=1,000'

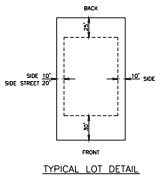
OWNER:  
WESTLAKE DEVELOPMENT, LLC  
124 ONE MADISON PLAZA, STE. 1500  
MADISON, MS 39110  
PH. 601-750-5111

SURVEYOR'S CERTIFICATE OF COMPLIANCE  
STATE OF MISSISSIPPI  
COUNTY OF MADISON

I, RONALD C. WAINSTER, JR., PROFESSIONAL ENGINEER AND SURVEYOR, DO HEREBY CERTIFY THAT THE INSTRUMENTS AND INSTRUMENT SHOWS HEREON ARE IN PLACE ON THE LOCATION AND THE PLAN AND PLAN SHOWS AND DESCRIBED HEREON ARE A TRUE AND CORRECT REPRESENTATION OF A SURVEY TO THE ACCURACY SPECIFIED IN THE SUBDIVISION REGULATIONS FOR MADISON COUNTY, MISSISSIPPI.

WITNESS MY SIGNATURE THIS THE 1<sup>ST</sup> DAY OF SEPTEMBER, 2017.

RONALD C. WAINSTER, JR., PROFESSIONAL ENGINEER AND SURVEYOR



TYPICAL LOT DETAIL

NOTES

THE TOTAL AREA FOR THIS PARCEL IS 108.45 ACRES.

THIS PARCEL OF LAND IS SITUATED IN FLOOD ZONE X, WHICH IS AN AREA DETERMINED BY THE 100-YEAR FLOOD PLAIN, ACCORDING TO F.A. COMMUNITY PANEL NO. 2888000397, MADISON CO., MISS. DATED MARCH 15, 2015.

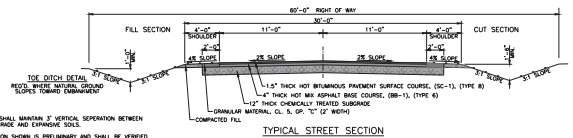
CONTRACTOR SHALL MAKE EVERY EFFORT TO KEEP EXISTING PUBLIC ROADS FREE AND CLEAR OF OBSTACLES DURING CONSTRUCTION.

ELEVATIONS ARE BASED ON NAD 83 BENCH MARK STAMPED "LOCAL 1999", ELEV. 228.527(40) MSL.

ALL CONSTRUCTION SHALL BE IN ACCORDANCE WITH THE SUBDIVISION REGULATIONS FOR MADISON COUNTY, MS.

CONTRACTOR SHALL CONTACT MISSISSIPPI ONE CALL SYSTEM TO LOCATE AND MARK ALL SUBGROUNDED UTILITIES BEFORE ANY EXCAVATION IS PERFORMED ON SITE.

ALL RADII ARE MEASURED TO THE EDGE OF PAVEMENT.



TYPICAL STREET SECTION

NOTES

CONTRACTOR SHALL MAINTAIN 1' VERTICAL SEPARATION BETWEEN TOP OF SUBGRADE AND EXISTING SOILS.

TYPICAL SECTION SHOWN IS PRELIMINARY AND SHALL BE VERIFIED BY A PAVEMENT DESIGN, OBTAINED FROM A GEOTECHNICAL ENGINEERING REPORT.

Revisions			
NO.	DATE	BY	REVISION

DESIGNED BY	M-2376-4	DATE	9-12-2017
CHECKED BY	R.C.M.	DATE	
DESIGNED BY		DATE	
CHECKED BY	C.G.	DATE	
DESIGNED BY		DATE	
CHECKED BY	R.C.M.	DATE	

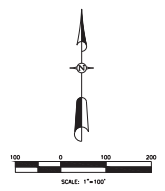
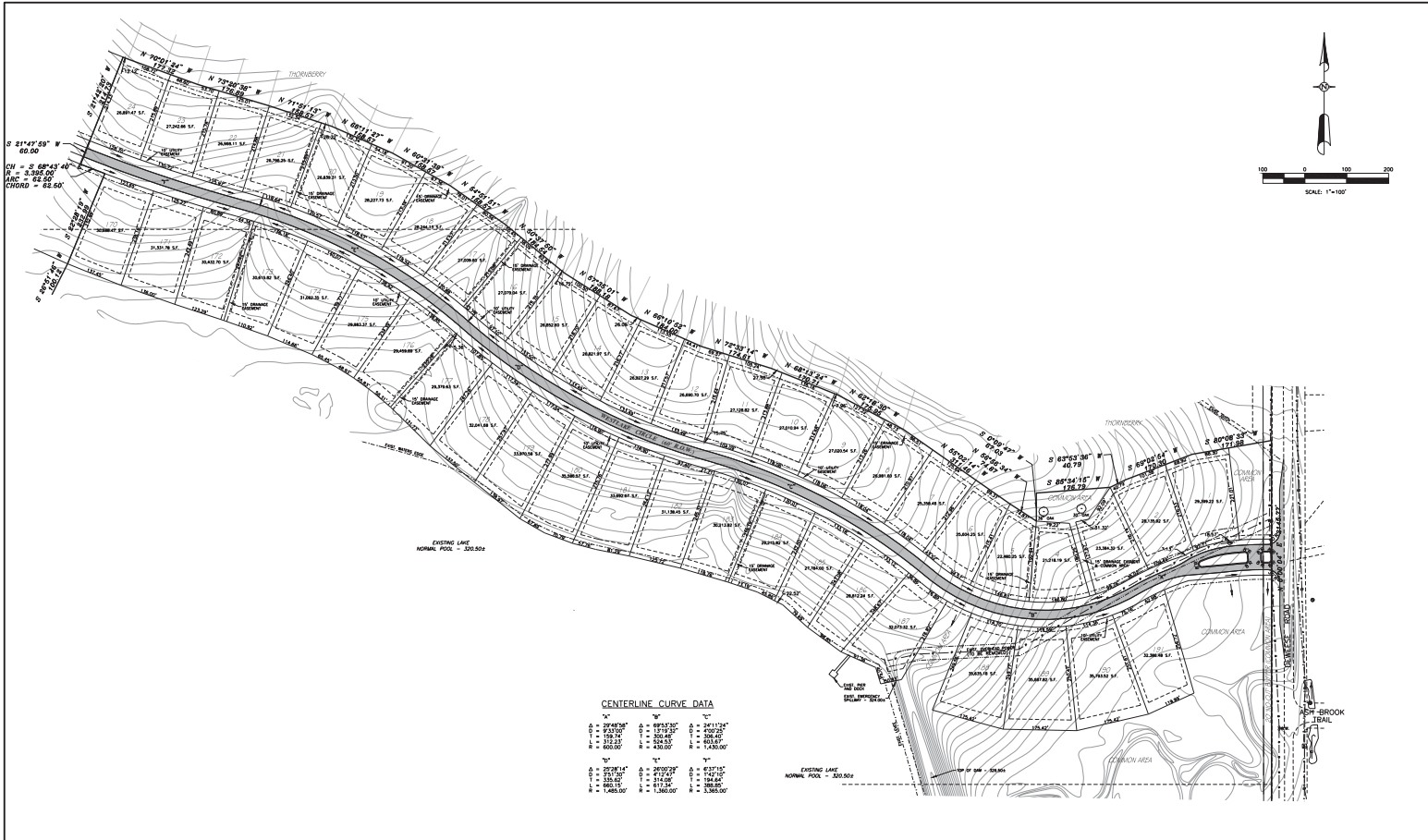
WESTLAKE, PHASE 1  
MADISON COUNTY, MISSISSIPPI

**M'MASTER & ASSOCIATES, INC.**  
CIVIL ENGINEERS & LAND SURVEYORS

212 WATERFORD SQUARE  
SUITE 300  
MADISON, MS 39110  
601.665.1090



PRELIMINARY  
PLAT  
**1**



Revisions			
No.	Date	Description	By

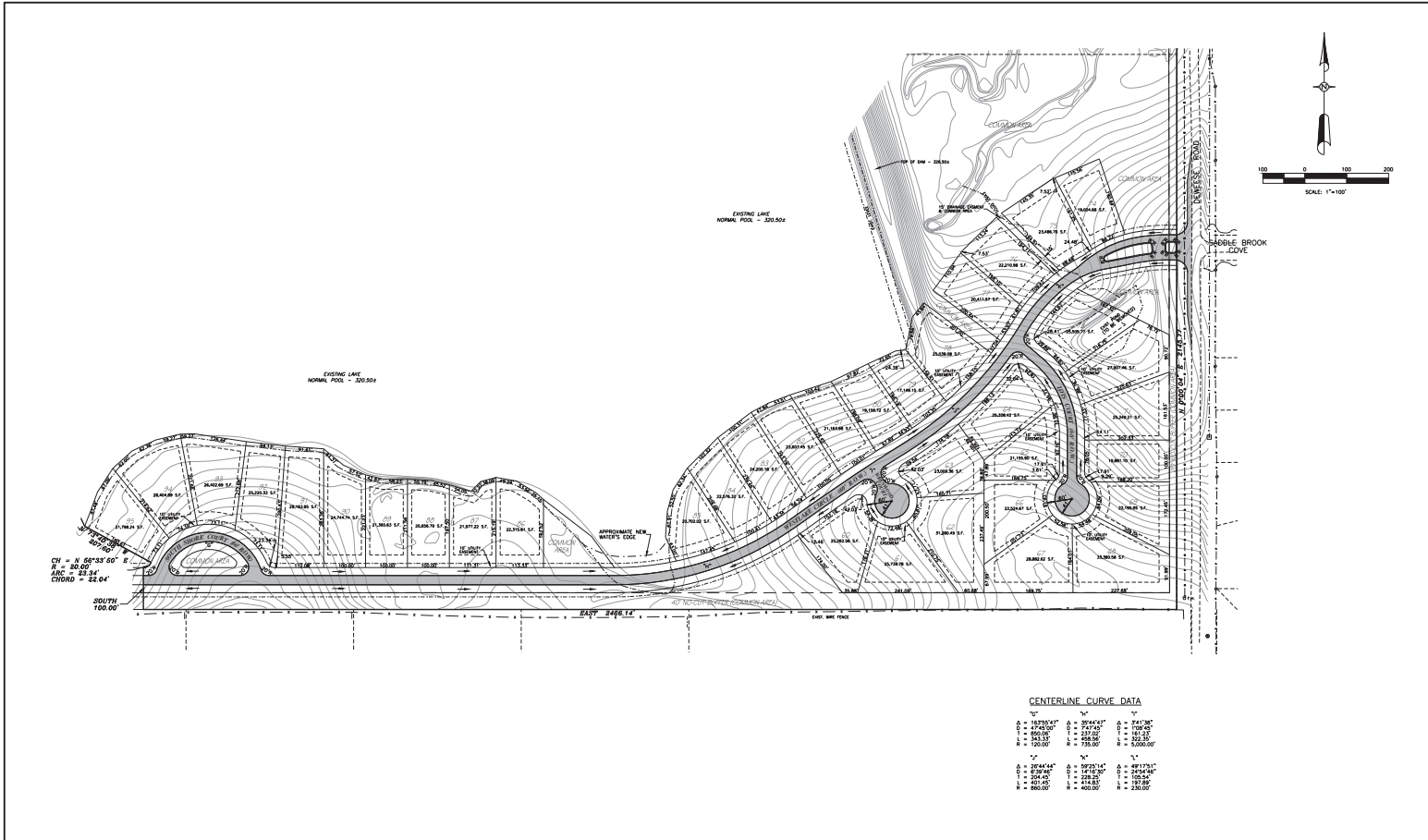
	M-2376-4	R.C.M.
	9-12-2017	C.G.
	SEE ABOVE	R.C.M.

**WESTLAKE, PHASE 1**  
 MADISON COUNTY, MISSISSIPPI

**M\*MASTER & ASSOCIATES, INC.**  
 CIVIL ENGINEERS & LAND SURVEYORS  
 212 WATERFORD SQUARE  
 SUITE 300  
 MADISON, MS 39110  
 601.665.1090



PRELIMINARY  
 PLAT  
**2**



Revisions			
No.	Date	By	Check

Project No.	M-2376-4	Drawn By	R.C.M.
Date	9-12-2017	Checked By	C.G.
Notes	SEE ABOVE	Reviewed By	R.C.M.

WESTLAKE, PHASE 1  
MADISON COUNTY, MISSISSIPPI

M\*MASTER & ASSOCIATES, INC.  
CIVIL ENGINEERS & LAND SURVEYORS

212 WATERFORD SQUARE  
SUITE 300  
MADISON, MS 39110  
601.665.1090

