

# McMASTER & ASSOCIATES, INC.

CIVIL ENGINEERS and LAND SURVEYORS

One Woodgreen Place, Suite 210

Madison, MS 39110

601-605-1090

601-605-1091 *fax*

## TRANSMITTAL MEMORANDUM

---

### Transmitted Via:

**To:** Chad Plumb / Rudy Warnock

Mail: \_\_\_\_\_

**From:** Ron McMaster, Jr.

Hand Delivered:   X  

**Date:** March 18, 2013

Overnight Mail: \_\_\_\_\_

**Project:** Esplanade

Email: \_\_\_\_\_

Pages w/Cover: \_\_\_\_\_

Fax Number: \_\_\_\_\_

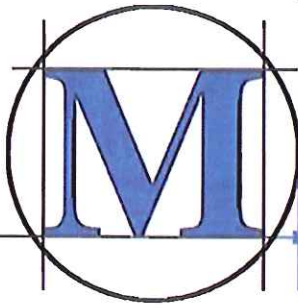
### Items Enclosed/Description

Please find enclosed 3 copies of a letter accepting maintenance for a piece of property along Parkway East to be placed on the April 1, 2013 board agenda. Please let me know of any questions you may have.

Sincerely,



Ron McMaster, Jr., P.E., P.S.



M<sup>c</sup>MASTER & ASSOCIATES, INC.  
CIVIL ENGINEERS & LAND SURVEYORS

March 12, 2013

Warnock & Associates, LLC  
160 West Center Street  
Canton, MS 39046

Attn: Rudy Warnock, P.E., County Engineer

Re: Project- The Esplanade  
Madison County, MS

Gentlemen:

Please allow this letter to serve as a request on behalf of St. Dominic Health Services, Inc. to assume the lawn-care maintenance of a 0.63 acre portion of property along the east side of Parkway East, in Madison County. The area is part of the St. Dominic Health Services, Inc. property located in Sections 31, 32, and 33 of Township 8 North, Range 2 East, Madison County, Mississippi and situated within an existing Utility and Drainage Easement as recorded in Deed Book 2245 at Page 931. The purpose for this request is to enable St. Dominic to install and maintain decorative landscaping improvements along Parkway East that will not only enhance the aesthetics of the area, but will also provide a 'screen' for the soccer fields that are a part of the development. These improvements will aid in the prevention of soccer balls being inadvertently kicked into traffic along Parkway East. No landscaping will be installed within the existing drainage ditch of Parkway East. The attached exhibits depict the location and nature of these improvements. Please review and let me know of any comments you may have. Should you have any questions, please contact me at 601-605-1090, Ext. 102.

Sincerely,

McMaster & Associates, Inc.

Ron McMaster, Jr., P.E., P.S.

RCM/wd  
enclosures:

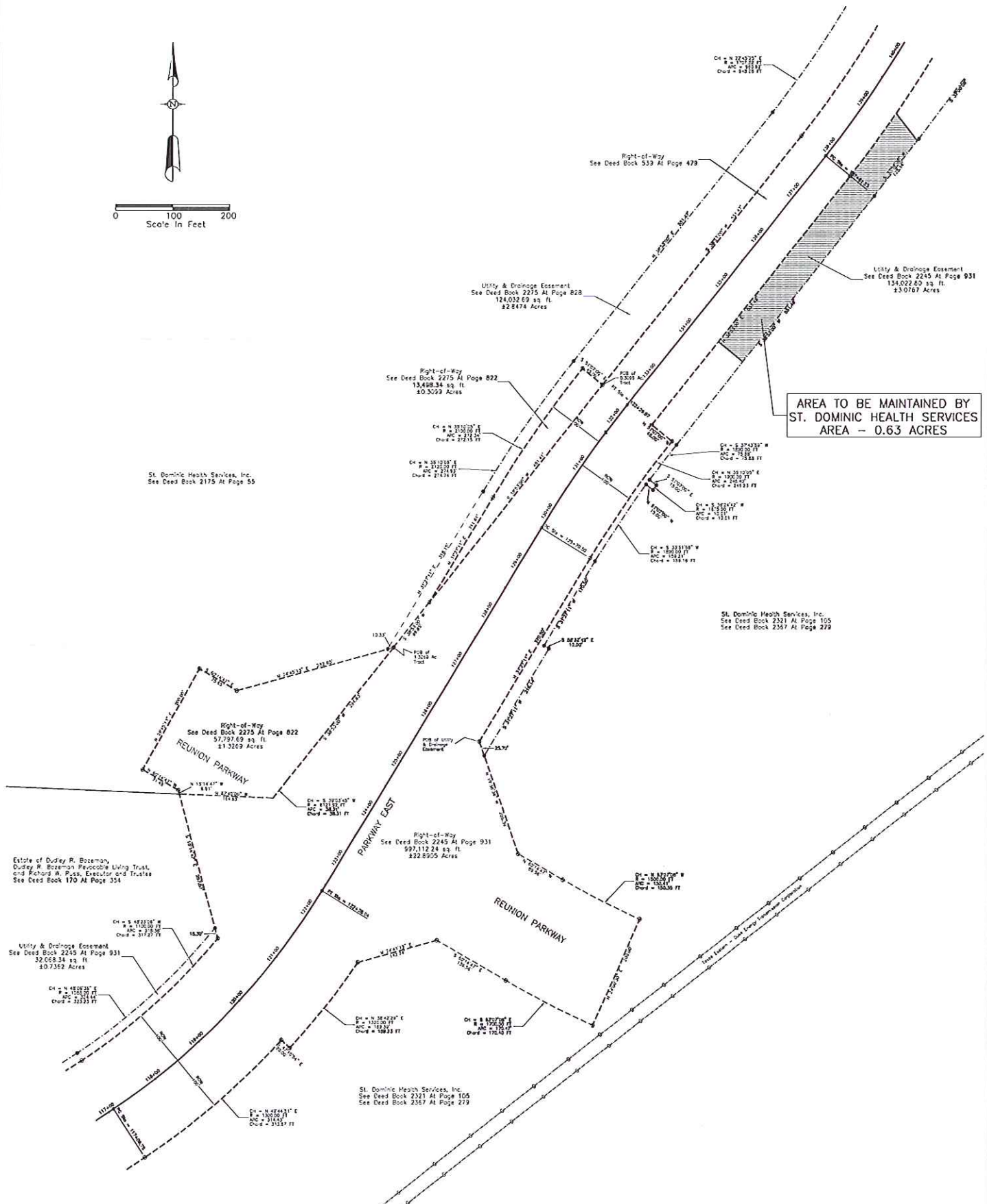
---

ONE WOODGREEN PLACE | SUITE 210 | MADISON, MS 39110  
PHONE: 601.605.1090 | FAX: 601.605.1091

"RELATIONSHIPS-RESULTS"

# PARKWAY EAST

SITUATED IN SECTIONS 28, 29, 32 & 33,  
T8N-R2E, MADISON COUNTY, MISSISSIPPI



AREA TO BE MAINTAINED BY  
ST. DOMINIC HEALTH SERVICES  
AREA - 0.63 ACRES

St. Dominic Health Services, Inc.  
See Deed Book 2175 At Page 55

St. Dominic Health Services, Inc.  
See Deed Book 2221 At Page 105  
See Deed Book 2367 At Page 279

Estate of Dudley R. Buzeman,  
Dudley R. Buzeman Revocable Living Trust,  
and Richard W. Puse, Executor and Trustee  
See Deed Book 170 At Page 354

Utility & Drainage Easement  
See Deed Book 2245 At Page 931  
32,069.34 sq. ft.  
80.7369 Acres

St. Dominic Health Services, Inc.  
See Deed Book 2321 At Page 105  
See Deed Book 2367 At Page 279

