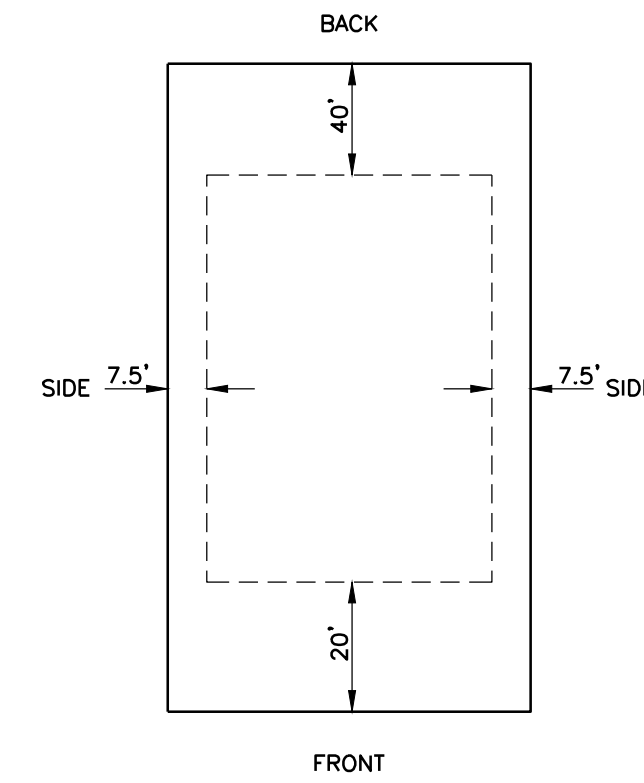
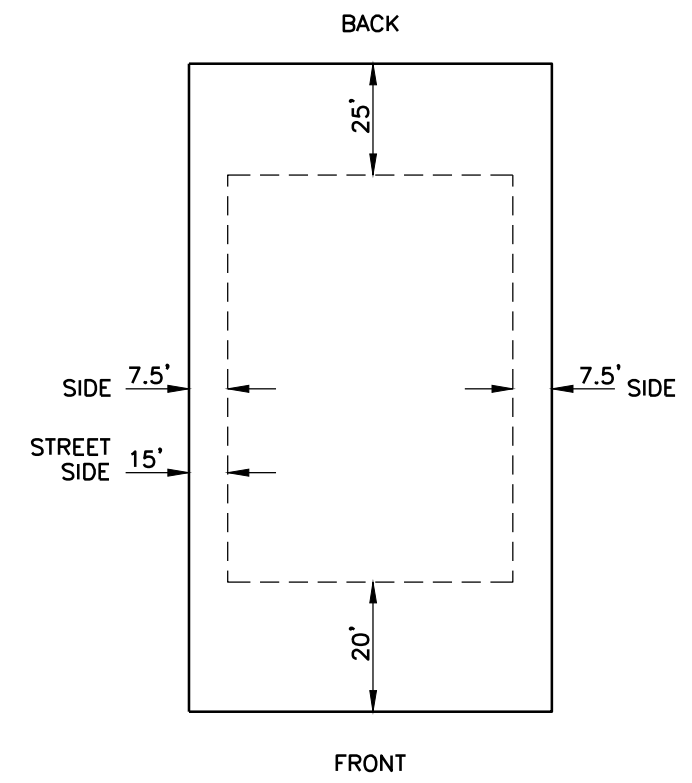


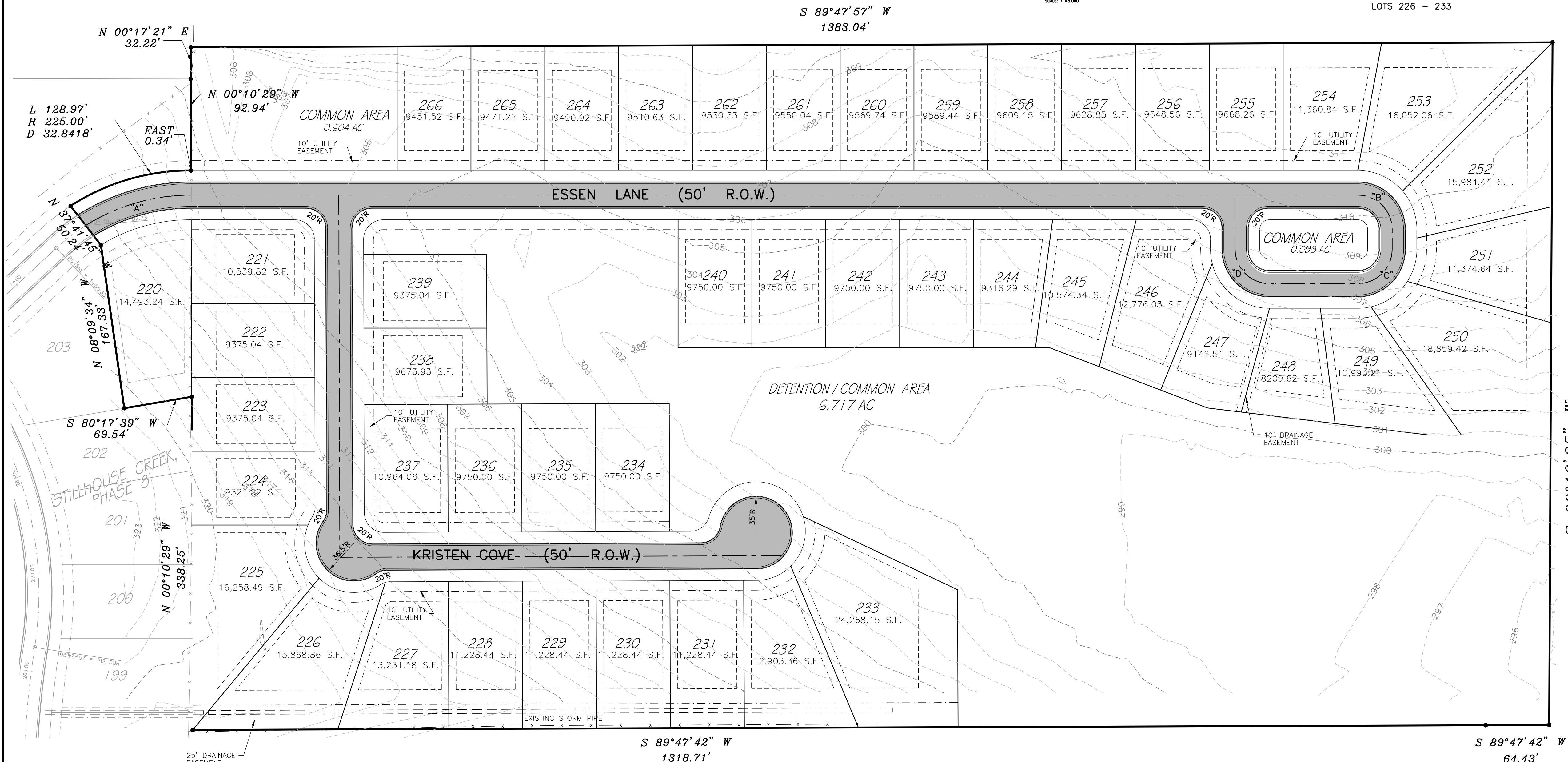
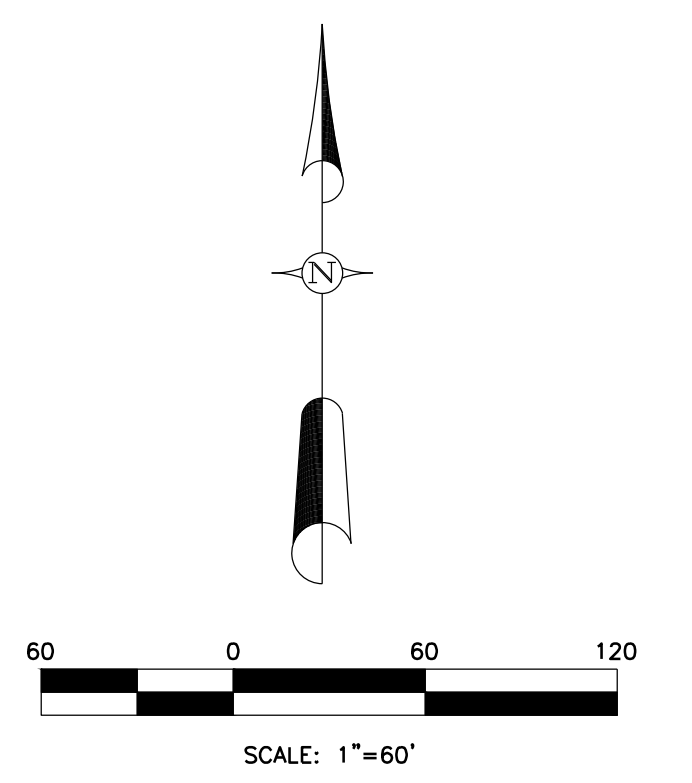
VICINITY MAP
SCALE: 1"=500'



TYPICAL LOT DETAIL
LOTS 226 - 233



TYPICAL LOT DETAIL



OWNER:
STILLHOUSE CREEK, LLC.
P.O. BOX 1260
RIDGELAND, MS 39157

SURVEYOR'S CERTIFICATE OF COMPLIANCE
STATE OF MISSISSIPPI
COUNTY OF MADISON

I, RONALD C. McMASTER, JR., PROFESSIONAL ENGINEER AND SURVEYOR, DO HEREBY CERTIFY THAT THE MONUMENTS AND MARKERS SHOWN HEREON ARE IN PLACE ON THE GROUND AND THE PLAT AND PLAN SHOWN AND DESCRIBED HEREON ARE A TRUE AND CORRECT REPRESENTATION OF A SURVEY TO THE ACCURACY DESIGNATED IN THE SUBDIVISION REGULATIONS FOR MADISON COUNTY, MISSISSIPPI.
WITNESS MY SIGNATURE THIS THE _____ DAY OF _____, 2014.

RONALD C. McMASTER, JR., PROFESSIONAL ENGINEER AND SURVEYOR

NOTES:

- THE TOTAL AREA FOR THIS PARCEL IS 22.427 ACRES.
THE TOTAL COMMON AREA FOR THIS PARCEL IS 7.419 ACRES.
- THIS PARCEL OF LAND IS SITUATED IN FLOOD ZONE X, WHICH IS AN AREA DETERMINED TO BE OUTSIDE THE 500-YEAR FLOOD PLAIN, ACCORDING TO F.I.A. COMMUNITY PANEL NO. 28089C0395F & 28089C0415F, MADISON CO., MISS. DATED MARCH 17, 2010.
- CONTRACTOR SHALL MAKE EVERY EFFORT TO KEEP STILLHOUSE CREEK DRIVE FREE AND CLEAN OF DEBRIS DURING CONSTRUCTION.
- ELEVATIONS ARE BASED ON NGS BENCH MARK STAMPED "56 ADP, 1959", ELEV. 297.411'.
- ALL CONSTRUCTION SHALL BE IN ACCORDANCE WITH THE SUBDIVISION REGULATIONS FOR MADISON COUNTY, MS.
- CONTRACTOR SHALL CONTACT MISSISSIPPI ONE CALL SYSTEM TO LOCATE AND MARK ALL UNDERGROUND UTILITIES BEFORE ANY EXCAVATION IS PERFORMED ON SITE.
- ALL RADIIUSES ARE MEASURED TO THE BACK OF CURB.

CENTERLINE CURVE DATA

"A"	"B"	"C"	"D"
Δ = 42°48'55"	Δ = 90°00'00"	Δ = 90°00'00"	Δ = 90°00'00"
D = 28°38'54"	D = 163°42'15"	D = 163°42'15"	D = 163°42'15"
T = 78.41'	T = 35.00'	T = 35.00'	T = 35.00'
L = 112.52'	L = 54.98'	L = 54.98'	L = 54.98'
R = 200.00'	R = 35.00'	R = 35.00'	R = 35.00'

Revisions				
#	Date	Nature	By	App'd.

Project No.	M-1642-10	Designed By	R.C.M.
Date	7/21/2014	Drawn By	D.P.
Scale	SEE ABOVE	Checked By	R.C.M.

STILLHOUSE CREEK, PHASE 11

McMASTER & ASSOCIATES, INC.
CIVIL ENGINEERS & LAND SURVEYORS

212 WATERFORD SQUARE
SUITE 300
MADISON, MS 39110
601.605.1090

PRELIMINARY PLAT

1